

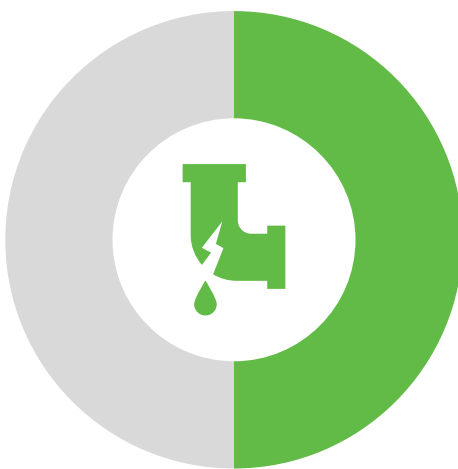


# Building water sustainability from the ground up

Bentley OpenFlows software can help transform water utility companies into powerhouses of water sustainability and efficiency by surfacing and connecting actionable data about their water, wastewater, and stormwater systems.

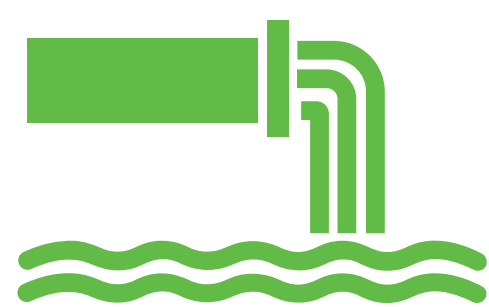
**Up to 50%**

Water lost through aging pipelines<sup>1</sup>



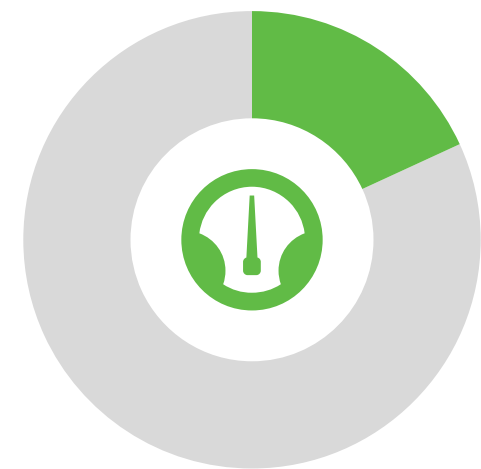
**2M tons**

Sewage and industrial / agricultural waste discharged into the world's water daily<sup>2</sup>



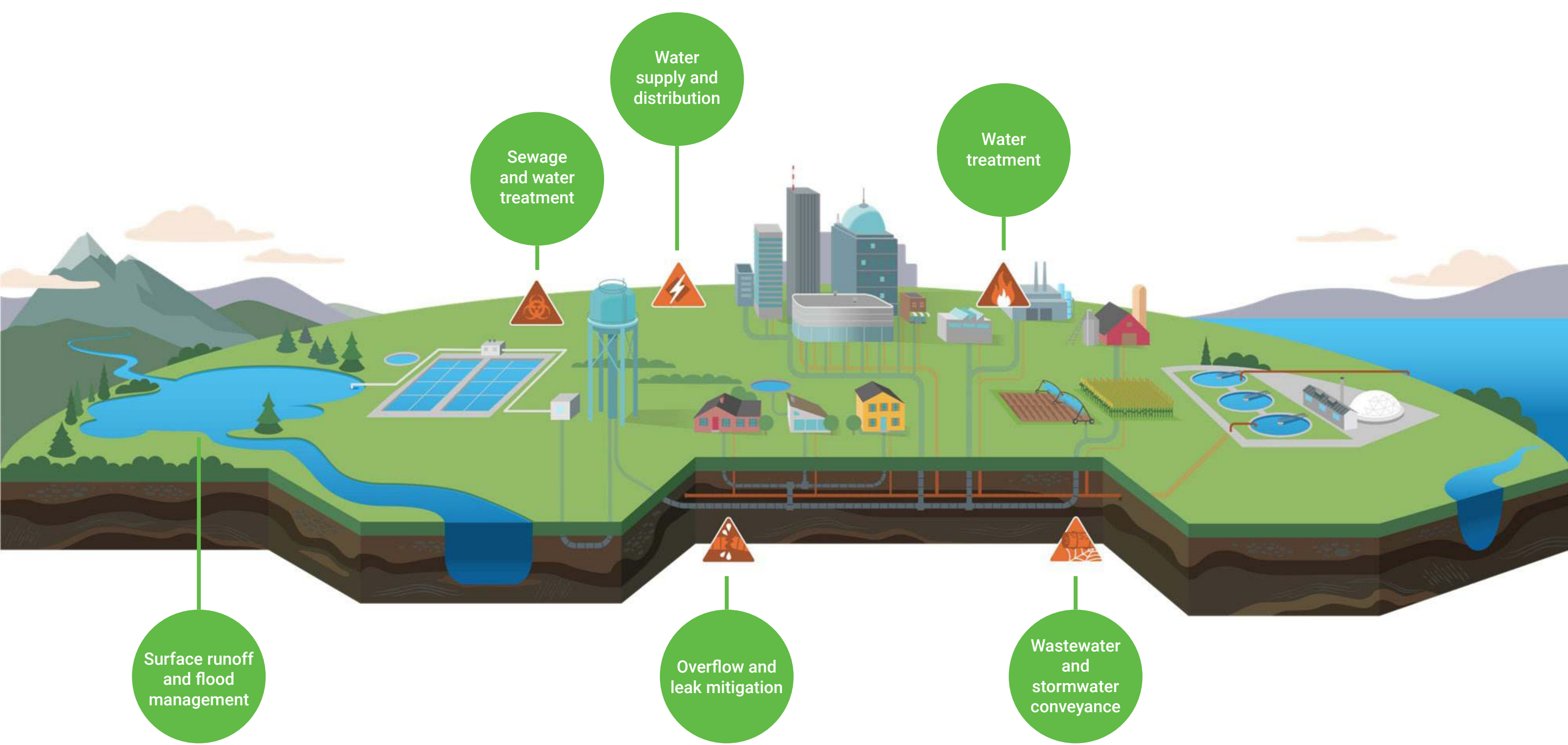
**20%**

Non-revenue water loss for the average utility<sup>3</sup>



## Bentley OpenFlows opens the tap to water system data

Bentley OpenFlows solutions combine real-time intelligence from sensor data with spatial analytics and numerical modeling capabilities, so you get visibility and insights for all your water systems.

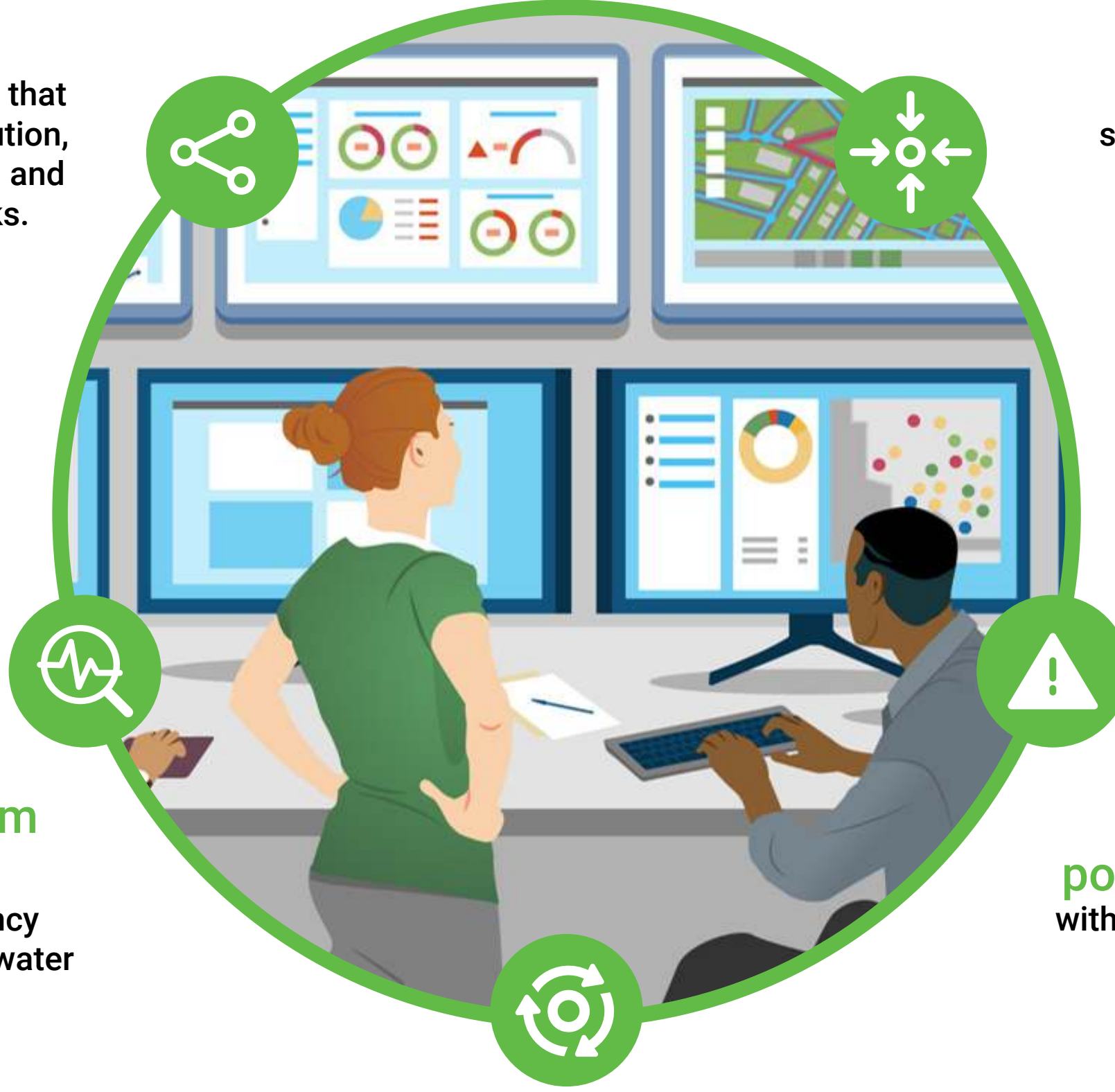


## OpenFlows makes sense out of a flood of information

With an OpenFlows digital twin, you'll get a single view of truth that updates in real-time for everything from pipes, pumps, and valves to metered sources, SCADA systems and more.

**Connect**  
the interrelated assets that make up water distribution, wastewater collection, and stormwater networks.

**Collect**  
all the data from all your sources into a single view—no more data silos.



**Analyze system resilience**  
to simulate emergency events with hydraulic/water quality models.

**Find existing and potential system leaks**  
with greater ease to reduce water waste and loss.

**Support risk-based strategic lifecycle management**  
by using data from your existing work and asset management systems.

## Imagine what you could do with OpenFlows

**Improve operational efficiency with less water loss and energy use**

**Better manage stormwater and wastewater**

**Improve readiness for water-related emergencies**



# Bentley and Microsoft help power water responsibility

Water utilities and municipalities around the world are driving toward net zero operations. And it's within reach with technology solutions from Bentley and Microsoft.

**Get started now.**

**Bentley:** [www.bentley.com/en/goingdigital/water/going-digital-in-water-utilities](http://www.bentley.com/en/goingdigital/water/going-digital-in-water-utilities)

**Microsoft:** [www.microsoft.com/sustainability](http://www.microsoft.com/sustainability)

**Email:** [responseteam@bentley.com](mailto:responseteam@bentley.com)



1. <https://www.waterworld.com/home/article/14070706/successful-water-leak-detection-and-audit-methods>  
 2. <http://www.unesco.org/new/en/natural-sciences/environment/water/wap/facts-and-figures/all-facts-wwdr3/fact-15-water-pollution/>  
 3. <https://www.waterworld.com/home/article/14070043/nonrevenue-water-how-much-is-lost>