

Five Compelling Reasons to Switch

Open the Power of OpenFlows™

OpenFlows | FIVE COMPELLING REASONS TO SWITCH



Bentley®

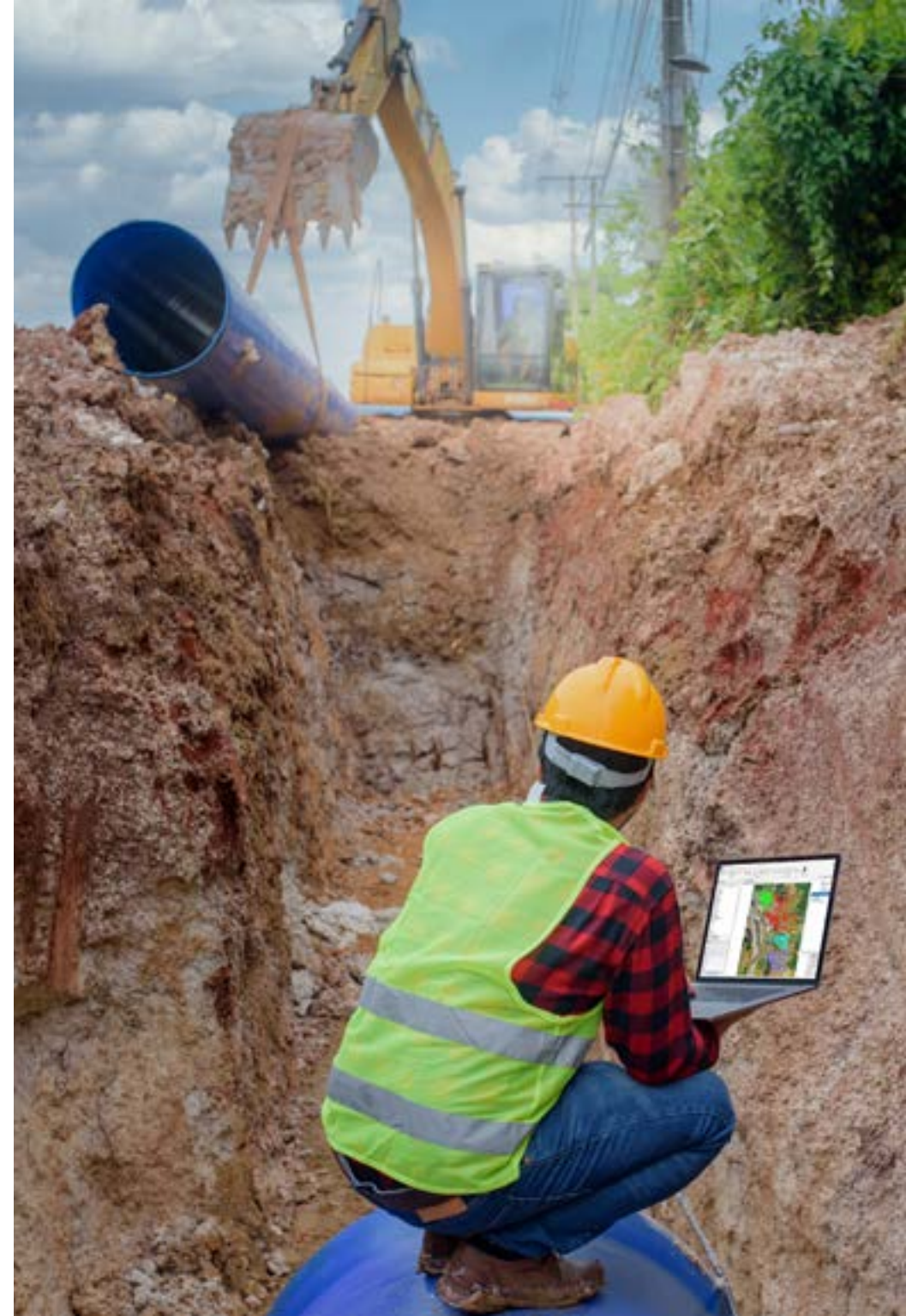
Know Your Options

Understand the long-term value of moving to OpenFlows software.

You may be tempted by short-term discounts from other software vendors that are meant to lure you into a long-term commitment. But before you make the move, it is essential to know your options.

- ◆ Does saving money up front mean paying even more in the long run?
- ◆ Are you already being forced to learn a new platform due to discontinued products?
- ◆ Will you actually get the support and training that you need from real water and wastewater experts, or will you be left hanging?

Bentley can offer you a better long-term partnership.



REASON 1

Support Your Unique Business

Every engineering consulting firm and utility is unique. Having only one option for project size and feature set locks you into a just-in-case scenario, rather than enabling you to scale to fit each project's requirements. For smaller businesses and those with multiple modelers, not having access to network licenses means you will pay much more for software in the long term. Bentley provides multiple feature levels and license options so you can select what works best for your business needs.

LICENSING AND SUBSCRIPTION OPTIONS

VIRTUOSO SUBSCRIPTION	PERPETUAL LICENSE WITH SELECT	CUSTOM LICENSE OPTIONS
<p>A popular choice for small and medium-sized businesses, a Virtuoso subscription provides a quick way to access the software at a low cost. Every online purchase also includes support and training so you and your team can get up and running quickly. With no contract required, it is easy to get started.</p>	<p>SELECT is a perpetual license for Bentley software. A one-time purchase with a yearly maintenance subscription includes 24/7/365 technical support, learning resources, and the ability to exchange licenses for other software once a year. Other benefits include license pooling and term licensing.</p>	<p>For enterprise organizations with in-depth requirements, we offer plans to provide global pricing and access to our comprehensive portfolio of solutions and success plan services. Connect with our water and wastewater industry experts to learn about options for your organization that address your unique needs.</p>

Be cautious of short-term discounts offered by other solutions that could lock you into paying more in the long run.



REASON 2

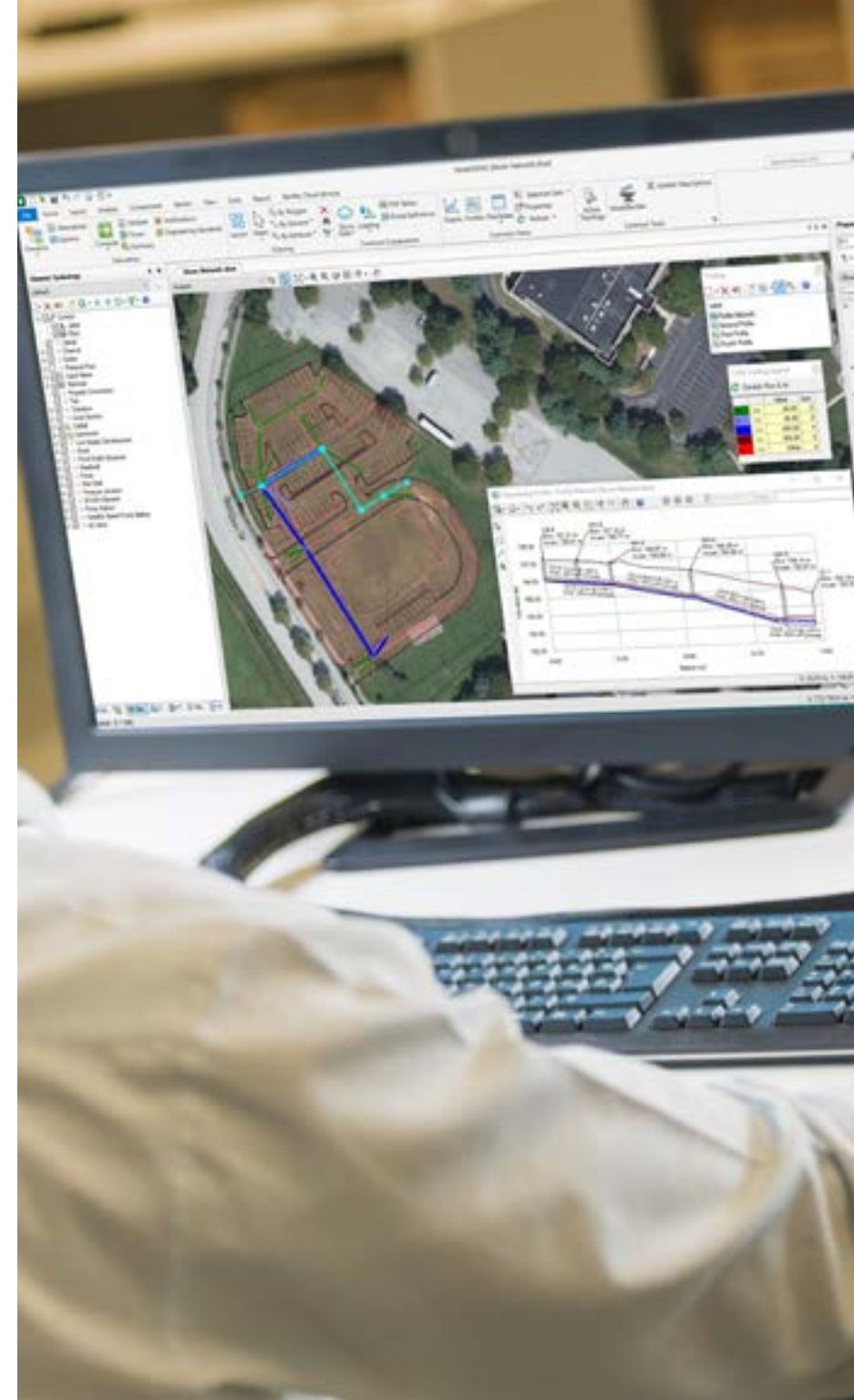
Multiplatform Compatibility

Flexibility is key, because each project has different requirements. Users of other water and wastewater software are locked into using one GIS platform for that particular software. Moving to another platform requires them to purchase a new version. Bentley offers a better shared data experience as well as a popular stand-alone option.

With OpenFlows™ WaterGEMS® and OpenFlows™ SewerGEMS®, you can perform modeling inside of CAD or GIS, or by using a stand-alone platform. All environments share a single project data source, so you can switch between them as preferred. Interoperable platforms include:

- ◆ Windows for ease of use, accessibility, and performance.
- ◆ ArcGIS Pro and ArcMap for GIS integration, thematic mapping, and publishing.
- ◆ MicroStation® and AutoCAD for CAD layout and drafting.

Enjoy the freedom of switching to the CAD or GIS program of your choice.



REASON 3

Technology You Can Trust

OpenFlows provides unmatched interoperability, advanced features, and a user-friendly interface. This stable, reliable, and consistent technology has been used by loyal hydraulic and hydrology engineering professionals for over forty years. With over USD 660 million spent on research and development over the past three years alone, Bentley is not just providing cutting-edge software today. Bentley is also leading the industry into the future of infrastructure software.

Over USD 660 million spent on research and development.



REASON 4

A Partner in Your Success

We draw on 40 years of experience and focus on infrastructure. When other design and engineering software companies might focus on disruption or converging divergent industries, Bentley provides reliable and stable technology, file-friendly formats, personalized support, and license options today and into the future. Experienced water and wastewater experts are available to help new users get up and running quickly with OpenFlows. Let Bentley be your true infrastructure partner.

What type of support does Bentley offer?

- ◆ New user resource guides
- ◆ Robust in-product quick start lessons
- ◆ Searchable Wiki knowledgebase
- ◆ On-demand courses and learning paths
- ◆ Formal expert training
- ◆ Keys – Tokens included in a Virtuoso subscription
- ◆ Product forums
- ◆ Webinars
- ◆ One-on-one personalized expert support

“OpenFlows is a very user-friendly software and easy to interface with. When we started using it, it didn’t take long at all to get our employees up and running at 100% capacity. The support we get from the experts at Bentley helps tremendously.”

– Matheus Vegas, Owner
Tecnologia em Saneamento Ambiental (TSA), Brazil



REASON 5

Attract Technology-savvy New Hires

The water industry is feeling the effects of the retiring workforce. Not only has it become more competitive to attract new employees that can replace the ones leaving, but fewer students are graduating colleges and universities with design and engineering skills. You must be able to recruit and hire students with the modern technical know-how to grow your business. The good news is that your future hires are learning OpenFlows in school and will be looking to work at companies where they can utilize this skill.

"I have been using OpenFlows software in school for about two years. I used it for multiple course projects, gaining valuable experience in its application for water and wastewater management. Now, the prospect of working towards ensuring clean and safe water for communities, while also contributing to sustainable resource management, seems highly attainable."

— Zainab Assaad, recent civil engineering graduate
American University in Dubai



Get to Know OpenFlows

With Bentley's water and wastewater software, you can plan intelligently, deliver clean water safely, model water system operations accurately, and make renewal decisions reliably. OpenFlows helps you confidently create master plans, support land development projects, and optimize the operations of water distribution, wastewater, and stormwater systems.

A few of the most popular OpenFlows applications



OpenFlows WaterGEMS

Water distribution,
design, and analysis
software.



OpenFlows SewerGEMS

Wastewater and
stormwater management
software.



OpenFlows HAMMER

Water hammer and
transient analysis
software.

[Learn about all of the OpenFlows applications >](#)

©2023 Bentley Systems, Incorporated. Bentley, the Bentley logo, MicroStation, OpenFlows, OpenFlows WaterGEMS, OpenFlows SewerGEMS, OpenFlows HAMMER, SELECT, and Virtuosity are either registered or unregistered trademarks or service marks of Bentley Systems, Incorporated or one of its direct or indirect wholly owned subsidiaries. Other brands and product names are trademarks of their respective owners. 07/23

Bentley

