



Building WorkSuite

Building and Site Design
and Analysis Solution Set

Building WorkSuite is the ultimate portfolio of design and analysis applications for building and land development. Architects, engineers, and construction professionals can design, visualize, communicate, and streamline building and site projects with solutions that all come from one company and all work together.

INTEGRATED WORKFLOW

With software for design, analysis, visualization, and project management, you can work within a unified ecosystem and efficiently communicate every aspect of a project from inception to completion. Reduce the need for switching between different applications, ensuring a smoother workflow and reducing the risk of errors or data loss. Seamless integration with reality modeling data means that users can deliver accurate designs during every phase of a project lifecycle.

COLLABORATION AND COMMUNICATION

Facilitate real-time collaboration with stakeholders through visualizations, updates, and reports. Changes can be viewed and discussed instantaneously. Improved communication with clients means quicker decisions, minimized design delays, and expedited project timelines.

DESIGN INNOVATION

Advanced design capabilities, such as parametric modeling and energy analysis, allows for the creation of more complex, sustainable, and innovative

designs that can be effortlessly adjusted to assess building performance and adhere to project specifications.

ACCURACY AND EFFICIENCY

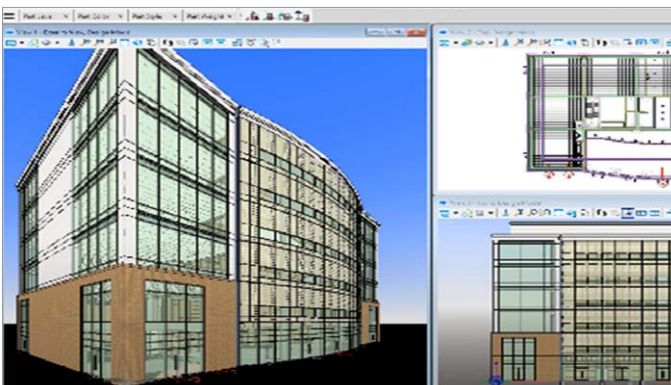
By harnessing design automation capabilities and implementing improved data management practices, Building WorkSuite applications help to significantly improve accuracy, decrease costly design errors, and lower the need for rework, resulting in more efficient project workflows.

FLEXIBILITY AND SCALABILITY

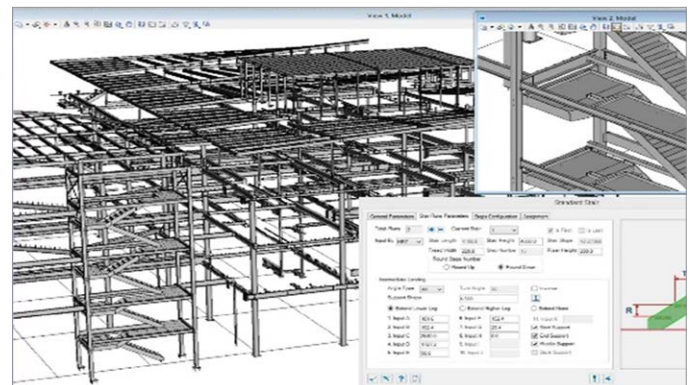
Building WorkSuite applications can easily adapt to projects of different sizes and complexities, freeing teams from spending time learning new applications or migrating to different software for different projects.

A PARTNER IN YOUR SUCCESS

Building WorkSuite includes all the applications that you need at one low price, making the bundle much more affordable for a much greater toolset. You'll get access to support services such as one-to-one mentoring by Bentley project experts, personalized training for your team, and on-demand learning to ensure that you and your team can quickly learn the latest technology and workflows while minimizing downtime and project costs.



Design modern, high-performance, and eco-friendly buildings.



Model complex reinforced concrete objects and steel structures with precision.

SYSTEM REQUIREMENTS

MINIMUM: Windows 11 or 10 (64-bit or 21H2) Windows Server 2019, Windows Server 2016 (64-bit), Intel or AMD processor 1.0 GHz or greater, 16 GB RAM

RECOMMENDED: 32 GB RAM

Building Worksuite At-A-Glance

OPENBUILDINGS® DESIGNER

All the capabilities you need (including OpenBuildings GenerativeComponents® and OpenBuildings Station Designer) to design modern, high-performance, and eco-friendly buildings.

- ◆ Advanced modeling, analysis, and simulation features, as well as collaborative capabilities for multidiscipline teams.
- ◆ Design, simulation, and analysis of building energy performance.
- ◆ Associative and parametric modeling system to automate design iterations.
- ◆ Design rail and metro stations of any complexity with functional space components.

OPENBUILDINGS SPEEDIKON®

A robust building design and documentation application for integrating design, drawings, reports, and data to meet German building standards.

- ◆ Advanced view filter technology to ensure high-quality representations of precise floor plans, sections, and elevations.
- ◆ Options for industrial and infrastructure design, including truss builders, steel structures, doors, skylights, and an SDNF interface.
- ◆ Includes a specialized DIN dataset calibrated to adhere to stringent DIN and VOB standards.

PROSTRUCTURES™

A comprehensive steel and concrete design application used to increase productivity and profitability.

- ◆ Model complex reinforced concrete objects and steel structures with precision.
- ◆ Reduce time and errors in documentation with automatic updates.
- ◆ Generate detailed models, placement drawings, fabrication details, and comprehensive reports.
- ◆ Ensure documentation accuracy with automatic updates reflecting model changes.

OPENSITE® DESIGNER

Intuitive capabilities to efficiently plan, design, and manage site design and land development projects.

- ◆ Generate comprehensive site design, including grading, drainage, road design, and more.

- ◆ Streamline workflows with seamless CAD, GIS, and BIM data integration.
- ◆ Create detailed terrain models for an accurate representation of site conditions.
- ◆ Visualize and analyze site designs in 3D for better understanding and decision-making.

BENTLEY LUMENRT™

Real-time visualization software used to transform designs into immersive digital experiences.

- ◆ Produce attention-grabbing and easily understandable visualizations within dynamic environments for stakeholders.
- ◆ Create vibrant 3D environments with nature, urban elements, and dynamic weather, improving stakeholder understanding of designs.
- ◆ Simplify animating objects and elements and simulate real-world motion to bring visualizations to life.
- ◆ Manage large models efficiently, accommodating everything from small designs to extensive urban projects.

BENTLEY DESCARTES™

A powerful application for enabling real-world condition integration into designs.

- ◆ Achieve seamless blending of raster, vector, and point cloud data for detailed modeling and analysis.
- ◆ Work with complex modeling capabilities for terrain, volumetric analysis, and 3D creation from 2D data.
- ◆ Boost productivity with specialized capabilities for raster and point cloud data, streamlining complex tasks.

ITWIN® CAPTURE MODELER

Cutting-edge technology designed to enhance digital twin workflows with reality data.

- ◆ Enable the creation, visualization, and analysis of reality meshes, point clouds, and digital photographs.
- ◆ Simplify converting raw reality data into actionable insights, supporting the processing of large datasets for digital twins.
- ◆ Foster stakeholder collaboration by incorporating reality models into the iTwin Platform, ensuring access to up-to-date models.
- ◆ Seamlessly integrate reality models with BIM and GIS data for detailed representation and accurate decision-making.