



Bentley Systems Introduces New Open API and Self-Service Tools in its Blyncsy Roadway Intelligence Offering to Accelerate the Development of Innovative Applications

NEW BRUNSWICK, NJ – (Northeast Association of State Transportation Officials (NASTO) Conference) – July 8, 2025 – [Bentley Systems, Incorporated](#) (Nasdaq: BSY), the infrastructure engineering software company, today announced the launch of an open API framework for its Blyncsy roadway intelligence solution. The new open API will enable third-party developers, users, and businesses to seamlessly integrate with the Blyncsy analytics solution with access to a new self-service portal that will significantly expand the accessibility and utility of the offering.

The open API framework aims to help accelerate innovation and extend the value of Bentley's Blyncsy analytics solution, enabling businesses to unlock roadway insights and develop a diverse range of applications for smart city initiatives and transportation planning to autonomous vehicle development and fleet management support.

The Blyncsy offering leverages AI and crowdsourced imagery to deliver actionable insights for infrastructure professionals. The solution enables automated detection and analysis of roadway assets and conditions, enhancing maintenance, disaster recovery, and transportation planning.

The open API will provide access to the crowdsourced dash camera imagery, including new pedestrian and bicyclist detection models, along with existing features such as roadway debris and vegetation detection. Additional roadway detections are planned for launch in 2025. The open API and self-service portal provide a standardized interface to streamline the process for partners, developers, and organizations to:

- Integrate Bentley's Blyncsy data directly into existing applications and platforms.
- Access comprehensive contextual information about roadways, including infrastructure locations, roadway conditions, and asset identification.
- Leverage self-service capabilities to easily manage access and utilize Bentley's Blyncsy offerings based on specific needs.

"Bentley Systems is committed to accelerating innovation within the transportation technology ecosystem and making data-driven insights more accessible and easily integrated for a broader audience," said Mark Pittman, senior director of Transportation AI at Bentley. "We expect our new open API will break down barriers and foster deeper collaborations, drive innovation, and ultimately contribute to safer and more efficient transportation systems worldwide."

The open API framework and self-service tools are available now on Bentley's [Blyncsy website](#).

About Bentley Systems

Around the world, infrastructure professionals rely on software from Bentley Systems to help them design, build, and operate better and more resilient infrastructure for transportation, water, energy, cities, and more. Founded in 1984 by engineers for engineers, Bentley is the partner of choice for engineering firms and owner-operators worldwide, with software that spans engineering disciplines, industry sectors, and all phases of the infrastructure lifecycle. Through our digital twin solutions, we help infrastructure professionals unlock the value of their data to transform project delivery and asset performance.

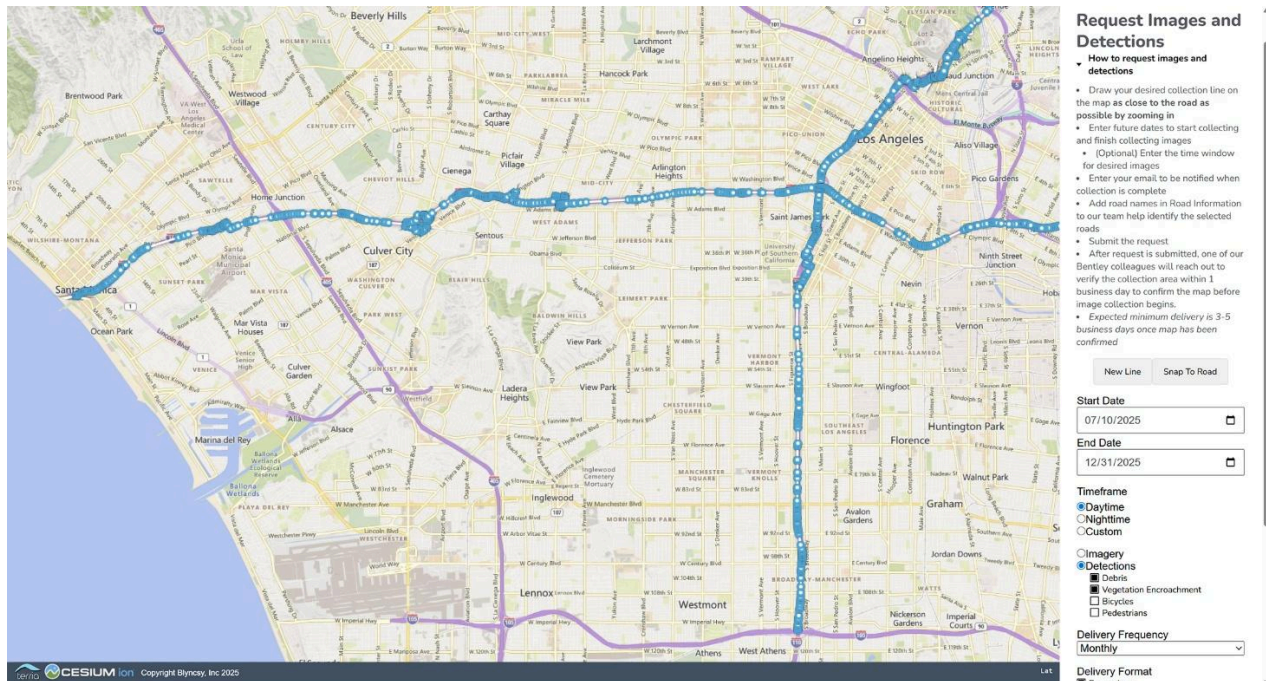
© 2025 Bentley Systems, Incorporated. Bentley, the Bentley logo, and Blynscy are either registered or unregistered trademarks or service marks of Bentley Systems, Incorporated or one of its direct or indirect wholly owned subsidiaries. All other brands and product names are trademarks of their respective owners.

For more information, contact:

Bentley Press: Chris Phillips, PR@news.bentley.com

Bentley Investors: Eric Boyer, IR@bentley.com

Associated Image:



An example of Bentley's Blynscy Open API portal, which enables transportation agencies to easily select roads to be inspected. (Image courtesy of Bentley Systems)

###